

ST ANTHONY'S COLLEGE

(A Don Bosco Institution)

SHILLONG 793 001

MEGHALAYA - INDIA

NAAC Re-Accredited with 'A'

College with Potential for Excellence (awarded by UGC)

Criteria 6 : Governance, Leadership and Management

6.5 : Internal Quality Assurance System

Key indicator

6.5.3 Quality assurance initiatives facilitated by the IQAC




Principal
St. Anthony's College
Shillong - 793001
Meghalaya - India



राष्ट्रीय मूल्यांकन एवं प्रत्यायन परिषद
विश्वविद्यालय अनुदान आयोग का स्वायत्त संस्थान
NATIONAL ASSESSMENT AND ACCREDITATION COUNCIL
An Autonomous Institution of the University Grants Commission

Certificate of Accreditation

*The Executive Committee of the
National Assessment and Accreditation Council
on the recommendation of the duly appointed
Peer Team is pleased to declare the
St. Anthony's College
Shillong, affiliated to North-Eastern Hill University, Meghalaya as
Accredited
with CGPA of 3.14 on four point scale
at A grade
valid up to July 09, 2021*

Date : July 10, 2014

Revised Certificate Issued on December 18, 2017



D. Singh
Director



राष्ट्रीय मूल्यांकन एवं प्रत्यायन परिषद

विश्वविद्यालय अनुदान आयोग का स्वायत्त संस्थान

NATIONAL ASSESSMENT AND ACCREDITATION COUNCIL

An Autonomous Institution of the University Grants Commission

Quality Profile

Name of the Institution : St. Anthony's College

Place : Shillong, Meghalaya

Criteria	Weightage (W_i)	Criterion-wise Weighted Grade Point (Cr WGP _i)	Criterion-wise Grade Point Averages (Cr WGP _i / W_i)
I. Curricular Aspects	100	300	3.00
II. Teaching-Learning and Evaluation	350	1150	3.29
III. Research, Consultancy and Extension	150	440	2.93
IV. Infrastructure and Learning Resources	100	330	3.30
V. Student Support and Progression	100	300	3.00
VI. Governance, Leadership & Management	100	320	3.20
VII. Innovations and Best Practices	100	300	3.00
Total	$\sum_{i=1}^7 W_i = 1000$	$\sum_{i=1}^7 (Cr WGP_i) = 3140$	

$$\text{Institutional CGPA} = \frac{\sum_{i=1}^7 (Cr WGP_i)}{\sum_{i=1}^7 W_i} = \frac{3140}{1000} = \boxed{3.14}$$

Grade = A

Descriptor = VERY GOOD



Signature
Director

Date : July 10, 2014

- This certification is valid for a period of Seven years with effect from July 10, 2014
- An institutional CGPA on four point scale in the range of 3.01 - 4.00 denotes A grade (Very Good), 2.01 - 3.00 denotes B grade (Good), 1.51 - 2.00 denotes C grade (Satisfactory)
- Scores rounded off to the nearest integer

Revised Certificate Issued on December 18, 2017 EC(SC)/02/RAR/116



Xavier Board of Higher Education in India

(An Association of Catholic Institutions of Higher Education in India)
31, Primrose Road, Bangalore – 560 025

Estd. 1951


Certificate

Reg.No.195/85-86
Dated Sept. 23, 1985

This is to certify that
St. Anthony's College,
Shillong, Meghalaya
has undertaken the process of
ACADEMIC AND ADMINISTRATIVE AUDIT
from **Feb. 17 -19, 2020** conducted by
Xavier Board of Higher Education in India, Bangalore.


Dr. Sr. Annamma Philip, FMM
Secretary General,
Xavier Board




Rev. Fr. Antony Arackal
President, Xavier Board &
Chairman, St. Albert's College
(Autonomous), Ernakulam

INTRODUCTION

Green audit is the process of systematic identification, quantification, recording, reporting and analysis of components of environmental diversity of various establishments. The aim of the audit is to analyze the environmental practices within the concerned sites, which will eventually have an impact on the eco-friendly ambience of the site. Green audit is a useful tool for a college to determine how and where most of the resources like water or energy are being used and then changes can be implemented for sustainable use of these resources. It can also be used for a recycling project or to improve waste minimization plan. It can create health consciousness and promote environmental awareness, values and ethics. It provides staff and students with a better understanding of the importance of green impact on the campus. Institutional self-enquiry is a natural and necessary outgrowth of a quality educational institution; Thus, it is imperative that the college evaluates its own contributions towards a sustainable future. As environmental sustainability is becoming an increasingly important issue for development of the nation, therefore the role of higher educational institutions in relation to environmental sustainability is more prevalent.

The rapid urbanization and economic development at the local, regional and global level has led to several environmental and ecological crises. In this note it becomes essential to adopt the system of green campus for the institutes which will lead to sustainable development and at the same time reduce a sizable amount of Carbon dioxide from the environment. The National Assessment and Accreditation Council, New Delhi (NAAC) has made it mandatory that all Higher Educational Institutions should submit an annual Green Audit Report. Moreover, it is part of Corporate Social Responsibility of the Higher Educational Institutions to ensure that they contribute towards the reduction of global warming through Carbon Footprint reduction measures.

OBJECTIVE

The objective of Green Audit for an institution is a paramount importance for self-assessment which reflects the role of the institution in mitigating the environmental issues of the campus. Efforts are being made from time to time to keep our environment clean since its inception. So, the purpose of the green audit is to prioritize a frame work of environmental sustainability in compliance with the existing policies and standards.

The main objectives of carrying out the Green Audit are:

- 1. To map the Geographical location of the institute along with the land use pattern.**
- 2. To document the floral and faunal diversity of the college.**
- 3. To document the ambient environmental parameters like air, water and noise of the college.**
- 4. To document the waste disposal system.**
- 5. To record the meteorological parameter of Shillong where the college is located.**

METHODOLOGY

The present study is for six months starting from 18th November 2020 till 20th May 2021 which is based on onsite visits, personal observations and survey tools. The Principal, Coordinator and other Green Audit Committee Members visited different departments and sections of the college and observed all the things related to green auditing of the college campus.

Monitoring and analysis of ambient Air quality (Sample Registration No A/82/20), Water quality (Sample Registration No G/189/20/1-4) and Noise level (Test method reference IS-9989/981RA2001/MPCB/CLSOP/2017-18/21) in the college was done by the Meghalaya State Pollution Control Board, Lumpynggad, Shillong.

The report on climate and weather conditions prevailing in Shillong city where the college is situated was collected from the Ministry of Earth Science, India Meteorological Department Regional Meteorological Centre, Guwahati.

Faunal and flora diversity in the campus was surveyed and photographic evidences of few fauna species was taken for evidence.

ABOUT THE COLLEGE

Established in 1934 under the religious and educational philosophy of St. John Bosco, the college was born out of the vision of a Don Bosco Father, Fr. Joseph Bacchiarello with the mission to bring about college education within the reach of common man and woman. Ever since the College has been nurtured by the Salesians of Don Bosco to be the vanguard of higher education in North East India. The College aim to equip the students for life, making them not only job-seekers, but also job-creators. Hence, in keeping with the developments in educational strategies worldwide, the College has pioneered courses in application-oriented subjects to answer to the needs of the community and to give graduates a competitive edge in the employment market.

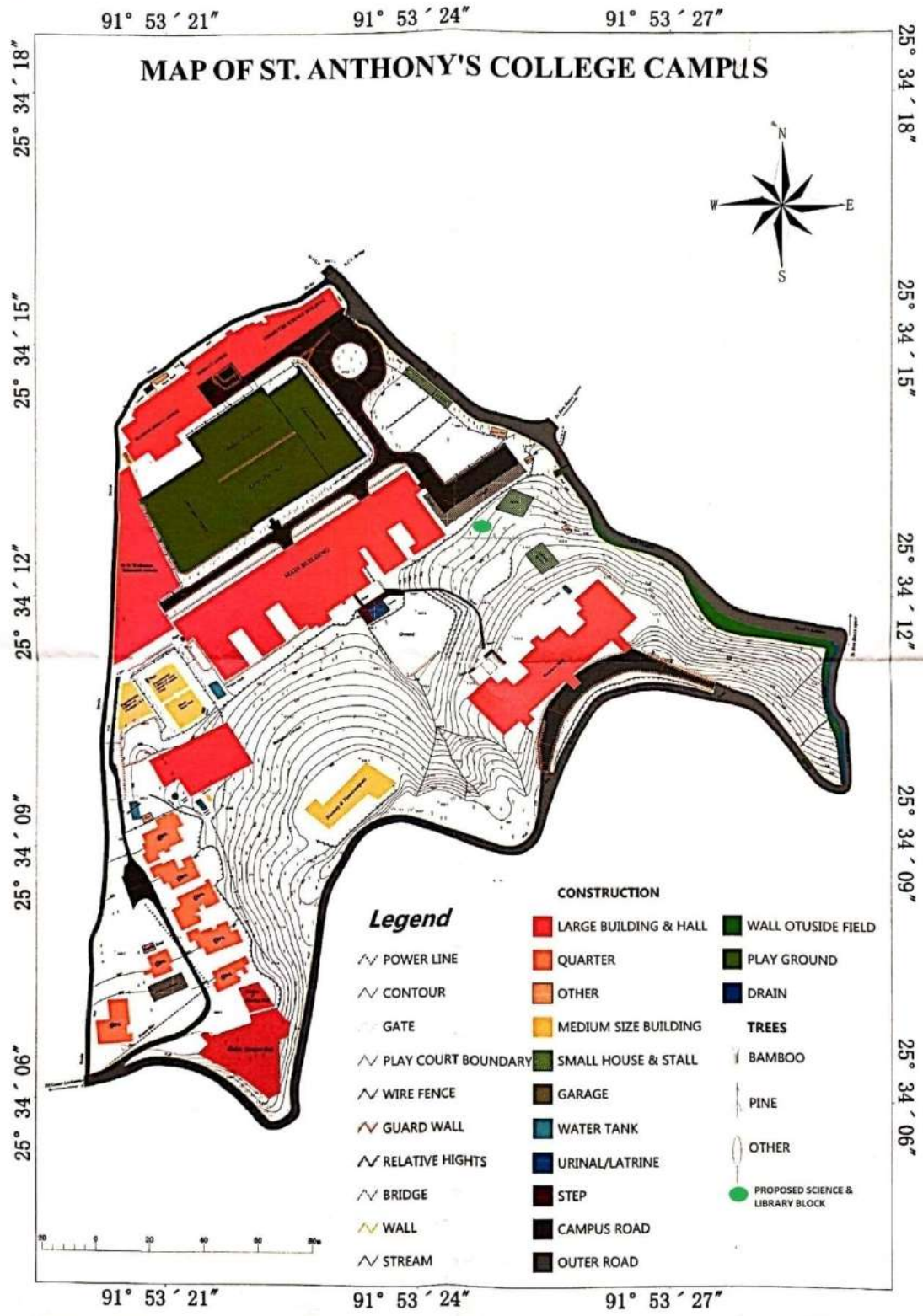
St. Anthony's College has an adequate academic and physical infrastructure catering to 24 honors courses for the Under-Graduate and has regular post-Graduate courses in 4 subjects: Computer Application, Biotechnology, Education and Political Science under the North Eastern Hill University.

VISION AND MISSION STATEMENT

"Providing holistic and quality education within the reach of all"

St. Anthony's College emphasize in life-oriented and value-based teaching to nurture a culture of solidarity. The educators and the educated join hands to mould intellectually competent, morally upright, socially committed and spiritually inspired persons capable of building human social order within the context of the nation's plurality of religions and diversity of cultures. Striving for excellence is our way of life. Our motto tells it all "**Ever More, Better Ever**".

MAP OF ST. ANTHONY'S COLLEGE WITH GEOGRAPHICAL LOCATION



LAND USE ANALYSIS OF ST. ANTHONY’S COLLEGE

GENERAL OVERVIEW ON THE CONCEPT OF LAND USE:

Land use refers to the activities of man that are derived from the various sources, which has now become very crucial in man’s activities on the natural resources. Viewing the earth from space provides information on human activities and the utilization of the landscape in situation of rapid changes in land use (Howarth, 1981). New tools like Remote Sensing and GIS techniques have now provide rapid information for advanced land use mapping and planning. Satellite imagery is particularly a useful tool in generating land use mapping.

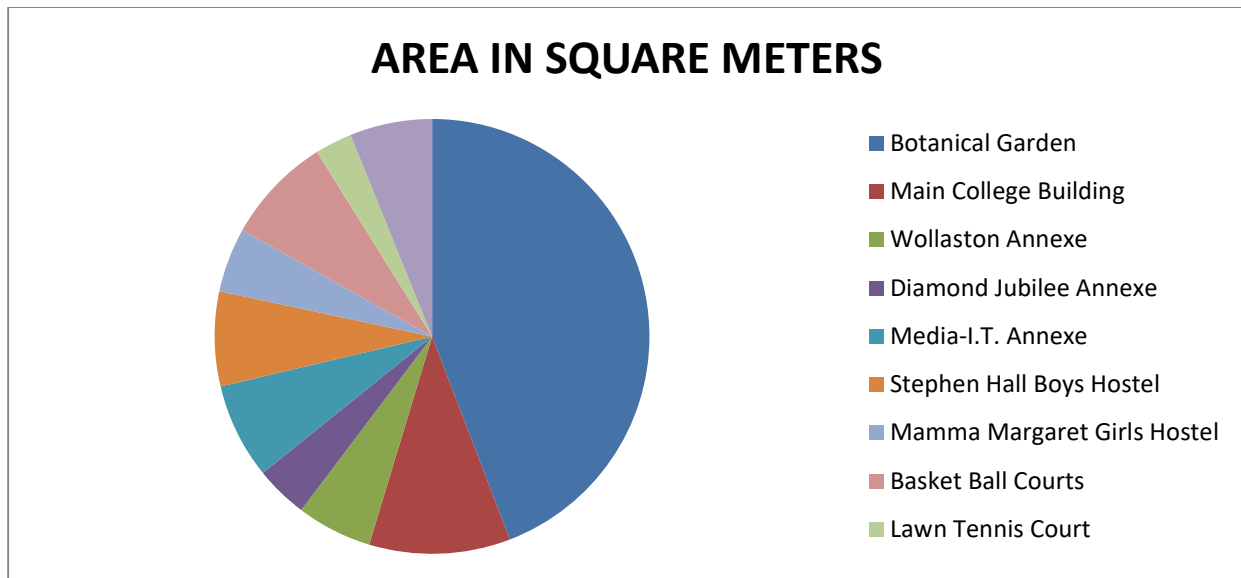
MAPPING ANALYSIS AND DATA PROCESSING:

The land use map was analyzed and processed using the following steps-

Acquisition of data, Geo-referencing and Geo-coding of satellite imageries of Google Earth was used for base map preparation. and the supervised classification was carried out with the aid of data collected during field survey using GPS for Location point and landmark positions. Scanning and digitization of maps and editing of all the Geo-referenced maps were done. Creation of GIS output in the form of land use map showing various land use have been prepared by data analysis and manipulation using GIS software (ArcGIS ver 10.2) for compiling all the layers.

TABLE 1: LAND USE DATA OF ST. ANTHONY’S COLLEGE

CATEGORY OF LAND USE	AREA IN SQUARE METERS
Botanical Garden	7310.02
Main College Building	1736.6
Wollaston Annexe	929.03
Diamond Jubilee Annexe	645.33
Media-I.T. Annexe	1178.5
Stephen Hall Boys Hostel	1162.75
Mamma Margaret Girls Hostel	795.6
Basket Ball Courts	1318.70
Lawn Tennis Court	458.75
Staff Quarters	1011.7



Graphical Representation of the Land use Pattern of St. Anthony’s College, Shillong

FLORISTIC DIVERSITY IN ST. ANTHONY’S COLLEGE CAMPUS

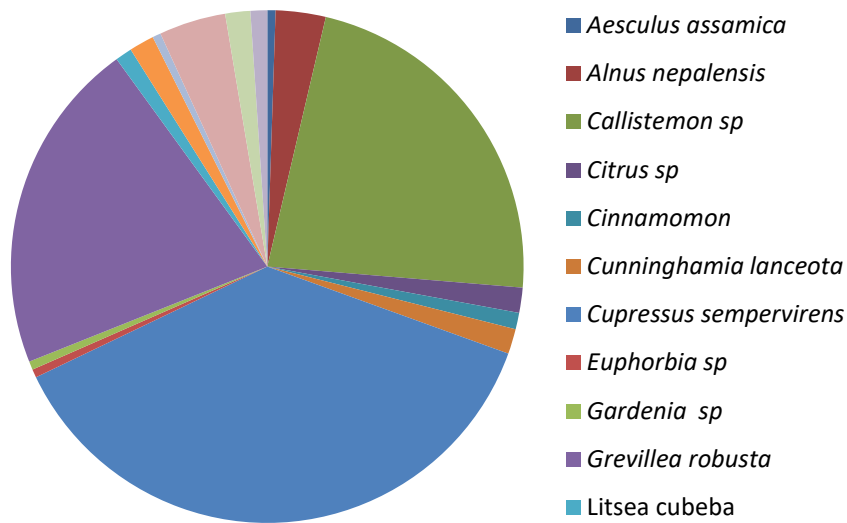
The green audit was conducted in the month of November 2020. The college has a green campus with around 3000 plant species belonging to different taxonomic groups of plants like trees, shrubs, herbs, climbers and orchids. Trees like *Cupressus*, *Cunninghamia*, *grevilea robusta* etc are planted in main entrance of the campus. The college also has a Botanical Garden with an area of approximately 4 acres. The botanical garden has enormous collections of different species of trees, orchids, medicinal plant, horticultural plants and other plants of botanical interest. The botanical garden aims to protect and conserve the biodiversity of the state, scientific research, display, and education. It also provides clean fresh air and makes pleasant and eco-friendly feeling to students and to every visitor in the campus.



GREEN BELT IN THE COLLEGE CAMPUS

TABLE 2: LIST OF TREES GROWING IN THE CAMPUS

SL NO	SCIENTIFIC NAME	FAMILY	Number
1	<i>Aesculus assamica</i>	Sapindaceae	1
2	<i>Alnus nepalensis</i>	Betulaceae	6
3	<i>Callistemon sp.</i>	Myrtaceae	43
4	<i>Citrus sp.</i>	Rutaceae	3
5	<i>Cinnamomon sp.</i>	Lauraceae	2
6	<i>Cunninghamia lanceota</i>	Taxodiaceae	3
7	<i>Cupressus sempervirens</i>	Cupressaceae	71
8	<i>Euphorbia sp.</i>	Euphorbiaceae	1
9	<i>Gardenia sp.</i>	Rubiaceae	1
10	<i>Grevillea robusta</i>	Proteaceae	40
11	<i>Litsea cubeba</i>	Lauraceae	2
12	<i>Magnolia gradifolia</i>	Magnoliaceae	3
13	<i>Myrica esculenta</i>	Myricaceae	1
14	<i>Prunus cerecoides</i>	Rosaceae	8
15	<i>Pyrus pashia</i>	Rosaceae	3
16	<i>Schima wallichii</i>	Theaceae	2



GRAPHICAL REPRESENTATION OF DOMINANT SPECIES GROWING IN THE CAMPUS

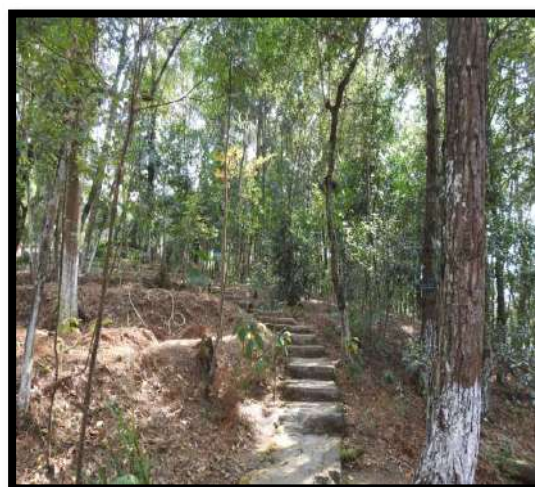
TABLE 3: LIST OF TREES GROWING IN BOTANICAL GARDEN

SL. NO.	SCIENTIFIC NAME	COMMON NAME/ LOCAL NAME	FAMILY
1	<i>Acacia mearnsii</i>		Mimosoideae
2	<i>Alnus nepalensis</i>	Indian Alder, Nepalese Alder	Betulaceae
3	<i>Albizzia sp.</i>		Mimosaceae
4	<i>Betula alnoides</i>		Betulaceae
5	<i>Cassia floribunda</i>	Hill-Cassia, Smooth Senna,	Caesalpiniaceae
6	<i>Cedrus deodara</i>	Dieng-deodar Bol-Deodar	Pinaceae
7	<i>Cinnamomum tamala</i>	Slatyrpad (K)Tejpat	Lauraceae
8	<i>Cinnamomum zeylanicum</i>	Ceylon cinnamon, Dalchini	Lauraceae
9	<i>Citrus medica</i> Linn.		Rutaceae
10	<i>Commelina benghalensis</i>		Commelinaceae
11	<i>Cryptomeria japonica</i>	Japanese Cedar	Taxodiaceae
12	<i>Cupressus sempervirens</i>	Mediterranean Cypress	Pinaceae
13	<i>Exbucklandia populnea</i>		Hamamelidaceae
14	<i>Grevillea robusta</i>	Silver Oak, Silky Oak	Proteaceae
15	<i>Jacaranda acutifolia</i>		Bignoniaceae
16	<i>Juglans regia</i>	Walnut	Juglandaceae
17	<i>Litsea cubeba</i>	Dieng-si-ing; Zeng-jil(G)	Lauraceae
18	<i>Litsea sebifera</i>	Dieng -ja-lowan (K)	Lauraceae
19	<i>Mahonia acanthifolia</i>	Dieng niang mat	Berberidaceae
20	<i>Magnolia grandiflora</i>		Magnoliaceae
21	<i>Melia azedarach</i> Linn	Dieng-jah-rasang	Meliaceae
22	<i>Michelia champaca</i> L.	Diengrai/shap Bal-nabat	Magnoliaceae
23	<i>Myrica esculenta</i>	Soh phie	Myricaceae
24	<i>Pinus kesiya</i>	Dieng Kseh, Dieng kysi	Pinaceae
25	<i>Prunus cerasoides</i>		Rosaceae
26	<i>Prunus undulata</i>		Rosaceae
27	<i>Pyrus baccata</i>	Soh-shur-um	Rosaceae
28	<i>Pyrus pyrifolia</i>		Rosaceae
29	<i>Pyrus pashia</i> Ham.	Soh-shur, Soh-jhur	Rosaceae
30	<i>Quercus sp.</i>		Fagaceae
31	<i>Rhododendron arboreum</i>	Tin-saw, dieng-tin-thuin	Ericaceae
32	<i>Rhododendron formosum</i>		Ericaceae
33	<i>Schima wallichii</i>		Theaceae
34	<i>Taxus wallichiana</i>	Dingsableh Common Yew	Taxaceae
35	<i>Thuja orientalis</i>	Broom-Grass	Cupressaceae

TABLE 4: LIST OF HERBS AND SHRUBS GROWING IN BOTANICAL GARDEN

SL NO	SCIENTIFIC NAME	COMMON NAME/ LOCAL NAME	FAMILY
1	<i>Achyranthes aspera</i>	Soh-byrthied	Amaranthaceae
2	<i>Ageratum conyzoides</i>	Bat karo, Bat myngai,	Asteraceae
3	<i>Allium tuberosum</i>	Jyllang	Liliaceae
4	<i>Anemone rivularis</i>	Bat-soh-plia	Ranunculaceae
5	<i>Alnus nepalensis</i>	Alder	Betulaceae
6	<i>Arisaema concinnum</i>	Chinese cobra family	Araceae
7	<i>Artemisia vulgaris</i>	U Jaiaw (K); Khel-bijak (G)	Compositae
8	<i>Asparagus racemosus</i>	Bat niangsohpet	Asparagaceae
9	<i>Bidens pilosa</i>	Sohbyrthit	Asteraceae
10	<i>Caryota urens</i>	Bastard Sago, Fishtail-palm.	Arecaceae
11	<i>Callicarpa arborea</i>	Beautyberry tree	Verbenaceae
12	<i>Centella asiatica</i>	Kynbat Moina / Khlein Syiar (J)	Apiaceae
13	<i>Curculigo capitulata</i>	Palm grass	Amaryllidaceae
14	<i>Curculigo orchioides</i>	Palm grass	Amaryllidaceae
15	<i>Cyathea brunoniana</i>	Indian tree fern	Cyatheaceae
16	<i>Cyathea andersonii</i>	Indian tree fern	Cyatheaceae
17	<i>Cycas pectinata</i>	Dieng-sia-goda	Cycadaceae
18	<i>Daphne involucrata</i>	Dientliuh	Thymelaeaceae
19	<i>Dioscorea bulbifera</i>	Aerial yam	Dioscoreaceae
20	<i>Elaeagnus latifolia</i>	Sohshang (K)	Elaeagnaceae
21	<i>Ageratina adenophora</i>	Phlang Burma,	Asteraceae
22	<i>Ageratina riparum</i>	Slaburma (J)	Asteraceae
23	<i>Galinsoga parviflora</i>	Quick weed	Asteraceae
24	<i>Fagopyrum cymosum</i>	Ja-rain(k)	Polygonaceae
25	<i>Fagopyrum esculentum</i>	Common Buckwheat	Polygonaceae
26	<i>Hedychium sp.</i>	Tiewsyng (K)	Zingiberaceae
27	<i>Houttuynia cordata</i>	Jamyrdoh	Saururaceae
28	<i>Hypochoeris radicata</i>		Asteraceae
29	<i>Lantana camara</i>	Soh pang khlieh	Verbenaceae
30	<i>Lycopodium clavatum</i>	Lycopodiaceae	Common Clubmoss
31	<i>Thysanolaena maxima</i>	Synsar (K), Suroo (J)	Gramineae
32	<i>Osbeckia crinita</i>	Ja-lang-kthem	Melastomataceae
33	<i>Osbeckia chinensis</i>		Melastomataceae
34	<i>Oxalis corniculata</i> Linn.	Bat soh khnai	Oxalidaceae
35	<i>Oxalis latifolia</i> Calder.		Oxalidaceae
36	<i>Passiflora edulis</i>	Passion Fruit	Passifloraceae

37	<i>Peperomia reflexa</i>		Peperomiaceae
38	<i>Phoenix humilis</i>	Dwarf date palm	Arecaceae
39	<i>Rubus acuminatus</i>	Sym- khlim	Rosaceae
40	<i>Rubus ellipticus sp.</i>	Soh shiah	Rosaceae
41	<i>Rumex nepalensis</i>	Jabar (K)	Polygonaceae
42	<i>Sarcandra glabra</i>	Syntiewkrismas (K)	Chloranthaceae
43	<i>Scutellaria discolor</i>		Labiatae
44	<i>Sida rhombifolia</i>	Soh-byrthit-rit	Malvaceae
45	<i>Smilax aspera</i> Linn		Smilacaceae
46	<i>Solanum nigrum</i>	Soh ngang	Solanaceae
47	<i>Solanum sisymbriifolium</i>		Solanaceae
48	<i>Trifolium repens</i>	White Clover	Papilionaceae
49	<i>Urena lobata</i>		Malvaceae
50	<i>Viburnum foetidum</i>	Dieng-soh-lang	Caprifoliaceae
51	Bamboos		
52	Mosses		
53	Ferns		



OVERVIEW OF BOTANICAL GARDEN

TABLE5: LIST OF MEDICINAL PLANTS GROWING IN BOTANICAL GARDEN

SL NO	SCIENTIFIC NAME	COMMON NAME/ LOCAL NAME	FAMILY
1	<i>Aloe vera</i>	Aloe	Liliaceae
2	<i>Acorus calamus</i>	Sweet flag	Araceae
3	<i>Centella asiatica</i>	KynbatMoina / KhleinSyiar	Apiaceae
4	<i>Costus speciosus</i>	Spiral Ginger	Zingiberaceae
5	<i>Drymaria cordata</i>	<i>La pia-pia, Sliaslia</i>	<i>Caryophyllaceae</i>
6	<i>Gaultheria fragrantissima</i>	Jalynthrait	Ericaceae
7	<i>Mahonia acanthifolia</i>	Dieng niang mat	Berberidaceae
8	<i>Plantago erosa</i>	ShkorBlang	Plantaginaceae
9	<i>Potentilla fulgens</i>	Lyngniang-bru (Langniang) (K)	Rosaceae
10	<i>Pouzolzia hirta</i>	Jamynasleh, Tyngkhnor	Urticaceae
11	<i>Rubia cordifolia</i>	Ryhoi, soh-misem	Rubiaceae
12	<i>Smilax glabra</i>	Shiahkrot (K)	Smilacaceae
13	<i>Solanum torvum sp.</i>	Dieng-sohngang	Solanaceae
15	<i>Spilanthes acmella</i>	Niangmieng (K)	Compositae
16	<i>Zingiber officinalis</i>	Sying	Zingiberaceae
17	<i>Kaempferia rotunda</i>	Ing khmoh	Zingiberaceae



HERBAL GARDEN IN THE CAMPUS

TABLE 6: LIST OF ORCHID CONSERVING IN BOTANICAL GARDEN

SL NO	SCIENTIFIC NAME	COMMON NAME/ LOCAL NAME	FAMILY
1	<i>Dendrobium sp.</i>	Tiewdieng	Orchidaceae
2	<i>Cymbidium sp.</i>	Boat orchids	Orchidaceae
3	<i>Coelogyne sp.</i>	Tiewdieng	Orchidaceae
4	<i>Paphiopedilum sp.</i>	Tiewdohmaw	Orchidaceae
5	<i>Rhynchostylis sp.</i>	Tiewdieng	Orchidaceae
6	<i>Eria sp.</i>	Tiewdieng	Orchidaceae
7	<i>Vanda sp.</i>	Blue vanda	Orchidaceae
8	<i>Bulbophyllum sp.</i>	Tiewdieng	Orchidaceae
9	<i>Arundinaria sp.</i>	Tiewdieng	Orchidaceae
10	<i>Liparis sp.</i>	Tiewdieng	Orchidaceae
11	<i>Kingidium sp.</i>	Tiewdieng	Orchidaceae



CONSERVATION OF *Paphiopedilum insigne* IN THE CAMPUS



Cymbidium sp.



Dendrobium sp.

COLLECTION OF ORCHID SPECIES IN THE BOTANICAL GARDEN

TABLE7: LIST OF PLANTS OF BOTANICAL INTEREST GROWING IN BOTANICAL GARDEN

SL NO	SCIENTIFIC NAME	COMMON NAME/ LOCAL NAME	FAMILY
1	<i>Nepenthes khasiana</i>	Tiewrakot	Nepenthaceae
2	<i>Balanophora elkinsii</i>		Balanophoraceae
3	<i>Brainae insignis</i>	Tyrkhang heh	Blechnaceae



Nepenthes khasiana



Brainae insignis

TABLE8 : LIST OF AQUATIC PLANTS GROWING IN BOTANICAL GARDEN

SL NO	SCIENTIFIC NAME	COMMON NAME/ LOCAL NAME	FAMILY
1	<i>Azolla sp.</i>	Water fern	Salvianiaceae
2	<i>Pistia sp.</i>	Water lettuce	Araceae
3	<i>Nymphaea sp.</i>	Water lilies	Nymphaeaceae
4	<i>Hydrilla sp.</i>	Water thymes	Hydrocharitaceae
5	<i>Algae</i>	Eitsalen, Sohpaillen um	



POND INSIDE THE BOTANICAL GARDEN

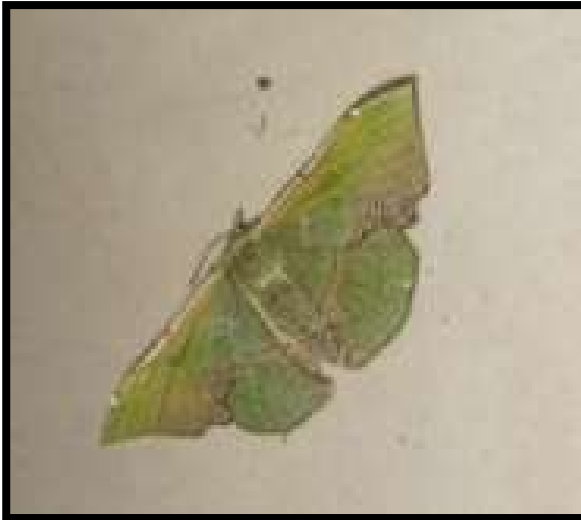
FAUNAL DIVERSITY OF ST. ANTHONY'S COLLEGE, SHILLONG, MEGHALAYA

St. Anthony's College is one of the premiere educational institutions situated in the East Khasi Hills District of Meghalaya in the capital city of Shillong. The state in which the college is located sits at an altitude of 1529 meters (4990 feet) above sea level with an average mean rainfall of 2954 mm. Meghalaya boasts of being a major hotspot of faunal and floral diversity and is part of the Indo-Burma biodiversity hot spot and identified as a key area for biodiversity conservation due to high species diversity and high level of endemism. The College with its vast campus containing a botanical garden of about 4 acres is home to diverse and endemic species of animals.

TABLE 9: LIST OF FAUNAL DIVERSITY IN THE COLLEGE CAMPUS

FAUNA	SCIENTIFIC NAMES
Spiders	<i>Achaearanea tepidariorum</i> (House Spider), <i>Eratigena sp.</i> (Hobo spider), <i>Myrmachne orientalis</i> (Family Salticidae), <i>Heteropoda sp.</i> (Huntsman Spider), <i>Nephila pilipes</i> (Giant Golden Orb Weaver).
Amphibians	Rhacophorus sp., <i>Bufo sp.</i> (Common Toad).
Butterflies & Moths	<i>Pieris rapae</i> (Cabbage white), <i>Papilio polytes</i> (Common mormon), <i>Papilio helenus</i> (Red Helen), <i>Triodes helena</i> (Common birdwing), <i>Eurema brigitta</i> (Small Grass Yellow), <i>Attacus atlas</i> (Atlas moth), <i>Actias sp.</i> (Malaysian Moon Moth), <i>Macroglossum sp.</i> , <i>Amata cysseus</i> (Handmaiden moth), <i>Fascellina plagiata</i> (Family-Geometridae), <i>Delias pasithoe</i> (Red-based Jezabel)
Other Arthropods	<i>Harmonia sp.</i> (Harlequin Ladybug), <i>Cotinus nitida</i> (Green Scarab Beetle), <i>Oryctes rhinoceros</i> (Rhinoceros beetle), <i>Anoplophora sp.</i> (Long Horn Beetle), <i>Pheretima sp.</i> (Earthworm), <i>Scolopendra sp.</i> (Centipede), <i>Diplacodes sp.</i> (Dragon Fly), <i>Oxya hyla hyla</i> (Grasshopper), <i>Apiscerana indica</i> (Indian Bee), <i>Vespula vulgaris</i> (Wasp), <i>Pimpla sp.</i> (Parasitoid wasp), <i>Planococcus sp.</i> (Mealybugs), <i>Suillia sp.</i> (Flies), <i>Cynomya sp.</i> (Blue Bottle Fly).
Reptiles	<i>Hemidactylus frenatus</i> (House Lizard), <i>Calotes sp.</i> , <i>Hemidactylus brookii</i> , <i>Sphenomorphus maculates</i> (Skink).

Birds	<i>Eumyias thalassinus</i> (Flycatcher), <i>Pycnonotus cafer</i> (Red vented Bulbul), <i>Athene noctua</i> (Little Owl), <i>Anser sp.</i> (Goose), <i>Tyto alba</i> (Barn Owl), <i>Corvus macrorhynchos</i> (Crow), <i>Passer domesticus</i> (House Sparrow),
Mammals	<i>Suncus murinus</i> (Asian House Shrew), <i>Pteropusmedius</i> (The Indian Flying Fox), <i>Sciurus carolinensis</i> (Eastern Grey Squirrel).



Fascellina plagiata



Harmonia sp. (Larva)



Ladybug



Anomala sp.



Cotinus nitida (Green Scarab Beetle)



Apis cerana (Honey Bee)



Parasitoid Wasp: *Pimpla* sp.



Planococcus sp.



Cynomya sp. (Blue Bottle Fly)



Delias pasithoe (Red-based Jezabel)

WEATHER DATA OF SHILLONG FOR THE YEAR 2020

STATION: SHILLONG

Period: 01.01.2020 to 31.12.2020

TABLE 10: MONTHLY TOTAL RAINFALL (in mm)

YEAR	MONTHS											
	Jan	Feb	Mar	Apr	May	Jun	Jul	Aug	Sep	Oct	Nov	Dec
2020	16.5	19.3	25.9	183.6	438.7	552.2	704.3	312.5	697.0	261.5	4.7	0.6

TABLE 11: MONTHLY MEAN MAXIMUM AND MINIMUM TEMPERATURE (in °C)

YEAR		MONTHS											
		Jan	Feb	Mar	Apr	May	Jun	Jul	Aug	Sep	Oct	Nov	Dec
2020	Max	14.5	16.2	20.3	22.5	22.5	24.3	24.0	25.2	24.1	23.4	21.6	17.0
	Min	4.8	6.2	11.5	N/A	N/A	N/A	18.6	18.6	18.0	16.5	11.8	7.1

TABLE 12: MONTHLY MEAN RELATIVE HUMIDITY (in %)

YEAR	TIME	MONTHS											
		Jan	Feb	Mar	Apr	May	Jun	Jul	Aug	Sep	Oct	Nov	Dec
2020	At 08:30 hrs IST	65	63	54	67	80	87	88	84	86	77	52	64
	At 17:30 hrs IST	88	81	71	70	86	82	88	86	91	90	80	92

TABLE 13: MONTHLY TOTAL SUNSHINE (IN HOURS)

YEAR	MONTHS											
	Jan	Feb	Mar	Apr	May	Jun	Jul	Aug	Sep	Oct	Nov	Dec
2020	168.4	136.7	188.6	172.7	131.4	114.7	50.5	126.3	85.5	151.0	206.7	206.5

Source: Ministry of Earth Science, India Meteorological Department Regional Meteorological Centre, Guwahati

TABLE 14: MONTHLY VARIATION IN THE DIFFERENT WEATHER PARAMETERS

Parameters	Jan	Feb	Mar	Apr	May	Jun	Jul	Aug	Sep	Oct	Nov	Dec
Monthly total rainfall (in mm)	16.5	19	25.9	184	439	552	704	313	697	262	4.7	0.6
Monthly mean maximum temperature (in degree Celcius)	14.5	16	20.3	22.5	23	24.3	24	25	24	23.4	21.6	17
Monthly mean minimum temperature (in degree Celcius)	4.8	6.2	11.5	N/A	N/A	N/A	19	19	18	16.5	11.8	7.1
Monthly mean relative humidity in % (at 0830 hrs IST)	65	63	54	67	80	87	88	84	86	77	52	64
Monthly mean relative humidity in % (at 1730 hrs IST)	88	81	71	70	86	82	88	86	91	90	80	92
Monthly total sun shine hours	168	137	188.6	173	131	115	51	126	86	151	207	207

Source: Ministry of Earth Science, India Meteorological Department Regional Meteorological Centre, Guwahati

TABLE 15: DAILY WIND DIRECTION & SPEED IN KMPH (at 0830 HRS IST) PERIOD : 01-01-2020 TO 31-12-2020

Date	Jan		Feb		Mar		Apr		May		Jun		Jul		Aug		Sep		Oct		Nov		Dec	
	Dir.	Spd.	Dir.	Spd.	Dir.	Spd.	Dir.	Spd.	Dir.	Spd.	Dir.	Spd.	Dir.	Spd.	Dir.	Spd.	Dir.	Spd.	Dir.	Spd.	Dir.	Spd.	Dir.	Spd.
1	32	002	00	000	00	000	32	002	00	000	00	000	00	000	00	000	00	000	00	000	00	000	00	000
2	00	000	23	002	00	000	23	002	00	000	00	000	00	000	00	000	00	000	00	000	00	000	00	000
3	14	002	00	000	23	002	23	004	00	000	00	000	00	000	00	000	32	002	00	000	00	000	00	000
4	00	000	14	004	00	000	32	004	00	000	00	000	00	000	14	010	00	000	00	000	23	002	00	000
5	00	000	00	000	00	000	32	002	00	000	00	000	00	000	14	008	00	000	00	000	32	000	00	000
6	00	000	23	004	00	000	00	000	00	000	23	002	00	000	32	004	32	002	00	000	00	000	00	000
7	00	000	14	002	23	002	23	004	00	000	23	002	00	000	14	004	23	004	00	000	00	000	00	000
8	00	000	14	002	00	000	32	004	00	000	00	000	00	000	32	002	00	000	00	000	14	002	00	000
9	00	000	23	004	00	000	14	004	00	000	00	000	23	004	32	002	00	000	00	000	00	000	00	000
10	00	000	05	002	00	000	23	004	00	000	00	000	00	000	32	002	00	000	00	000	36	004	00	000
11	05	002	00	002	00	000	23	004	00	000	00	000	23	004	32	004	29	002	00	000	14	002	00	000
12	23	002	00	000	32	002	32	002	00	000	00	000	00	000	32	004	00	000	00	000	00	000	00	000
13	00	000	00	000	00	000	00	000	00	000	00	000	00	000	05	002	23	002	00	000	00	000	00	000
14	00	000	00	000	00	000	00	000	00	000	14	000	00	000	05	002	00	000	00	000	00	000	00	000
15	00	000	00	000	23	002	00	000	00	000	00	000	00	000	32	002	00	000	00	000	00	000	00	000
16	00	000	00	000	29	002	00	000	00	000	00	000	00	000	23	008	00	000	00	000	00	000	00	000
17	00	000	05	002	05	004	32	006	32	002	00	000	00	000	23	004	23	002	00	000	32	000	32	002
18	00	000	23	002	32	004	00	000	00	000	00	000	23	004	32	002	00	000	00	000	00	000	00	000
19	23	004	14	002	00	000	23	006	00	000	00	020	00	000	14	004	00	000	00	000	00	000	00	000
20	23	004	00	000	23	004	00	000	00	000	00	000	00	000	32	002	14	004	00	000	00	000	00	000
21	23	004	05	004	00	000	00	000	14	006	23	002	00	000	00	000	14	004	00	000	00	000	36	004
22	32	002	00	000	00	000	32	002	00	000	00	000	00	000	00	000	00	000	00	000	00	000	00	000
23	00	000	32	002	00	000	23	004	14	004	00	000	00	000	00	000	00	000	00	000	00	000	00	000
24	00	000	23	004	32	002	00	000	23	006	23	002	00	000	00	000	00	000	00	000	02	002	00	000
25	00	000	00	000	32	004	00	000	32	006	23	004	00	000	14	002	23	002	23	000	00	000	00	000
26	00	000	14	002	32	002	00	000	23	006	23	004	00	000	00	000	23	002	00	000	00	000	00	000
27	00	000	32	002	32	004	14	004	23	006	23	002	00	000	00	000	00	000	00	000	00	000	00	000
28	05	002	00	000	23	004	00	000	00	000	00	000	00	000	00	000	00	000	05	002	00	000	00	000
29	00	000	00	000	32	006	00	000	00	000	00	000	00	000	00	000	00	000	00	000	00	000	00	000
30	32	004			32	002	00	000	00	000	00	000	00	000	00	000	00	000	00	000	00	000	00	000
31	00	000			00	000			00	000			00	000	00	000			00	000			00	000

Note : Dir.-Direction, Spd.- Speed

(1) Direction in 16 compass, i.e. N → 36 , NNE → 02, NE → 05, ENE → 07 , E → 09, ESE → 11 , SE → 14 , SSE → 16 , S → 18 , SSW →20, SW →23, WSW→ 25, W → 27, WNW → 29 , NW → 32 , NNW → 34 , N → 36 & calm → 00.

(2) Speed in KMPH unit.

AMBIENT AIR QUALITY OF ST. ANTHONY'S COLLEGE, SHILLONG

1	Name of the Project	Ambient Air Quality of St. Anthony's College	
2	Sample Matrix	Ambient Air	
3	Time duration of sampling	24 hrs (8 hrs interval for rspm, 4 hrs interval for gaseous)	
Meteorological Parameters			
1	General Weather condition	P Clear/ Clear	
2	Temperature ($^{\circ}\text{C}$)	Min: 5.8	Max: 17.9
3	Relative Humidity (%)	Min: 48.4	Max: 79.6
4	Wind Speed (km/hr)	Min: 1.6	Max: 10.1
5	Wind Direction (most prevailing)	NE-SW	
6	Rainfall (mm)	-	

TABLE 16: LIST OF PARAMETERS, METHODS AND PERMISSIBLE LIMITS OF AIR QUALITY IN THE CAMPUS

Parameters	Test Method	Permissible Limits (24 hours average) EPA Notification GSR 826 (E) dated New Delhi, the 16 th Nov, 2009	Sampling Station Code/Name
			A/82/20
			Basketball Court
Particulate Matter (PM 10) ($\mu\text{g}/\text{m}^3$) (24 hrs avg.)	IS: 5182 (Pt-23)	100	47.6
Particulate Matter (PM 2.5) ($\mu\text{g}/\text{m}^3$) (24 hrs avg.)	EPA CFR-40 (Pt-50)	60	26.7
Sulphur dioxide (SO_2) ($\mu\text{g}/\text{m}^3$) (24 hrs avg.)	IS: 5182 (Pt-2)	80	2.0
Nitrogen dioxide (NO_2) ($\mu\text{g}/\text{m}^3$) (24 hrs avg.)	IS: 5182 (Pt-6)	80	11.2

Source: Meghalaya State Pollution Control Board (MSPCB), Shillong, Meghalaya

Remarks: The parameters tested were found to be within the prescribed limits of National Ambient Air Quality Standards (NAAQS) as per EPA Notification GRS 826(E), dated New Delhi, the 16th Nov, 2009.

WATER ANALYSIS REPORT OF ST. ANTHONY'S COLLEGE

Name of the Project	Water analysis of St. Anthony's College
Sample Matrix	Water
Samples Collected by	Meghalaya State Pollution Control Board (MSPCB), Shillong, Meghalaya

TABLE 17: LIST OF PARAMETERS, METHODS AND PERMISSIBLE LIMITS OF WATER QUALITY COLLECTED FROM DIFFERENT SITES IN THE CAMPUS

Parameters	Test Method: APHA: 23er Ed. No.	Limits	Sample code/Sampling location			
		Indian Standard for Drinking Water (IS: 105500-2012)	G/189/20/1 Ground Water Media IT Annexe	G/189/20/2 Borewell, Fisheries Dept.	G/189/20/3 Spring Water, Mamma Margaret Hall	G/189/20/4 Administrative Building
pH	4500-H ⁺ B	6.5-8.5	6.1	4.6	6.6	5.7
Conductivity (µmho/cm)	2510 A	*	152.0	159.0	293.0	98.0
Turbidity (NTU)	2130 B	1.0	1.3	3.1	6.1	0.55
Chloride (mg/l)	4500-Cl B	250.0	24.0	21.0	24.0	21.0
Total Alkalinity as CaCO ₃ (mg/l)	2320 B	200.0	14.0	6.0	74.0	10.0
Total Hardness as CaCO ₃ (mg/l)	2340 C	200.0	32.0	42.0	98.0	20.0
Nitrate-N (mg/l)	4500-NO ₃ D	45.0	6.5	12.2	12.5	2.6
Iron (mg/l)	3500-Fe B	0.3	0.11	0.11	0.28	0.09
Total Coliform (MPN/100ml)	9221 B	Shall not be detectable	ND**	ND**	79	33

**Not Prescribed/ ** Not Detectable*

Source: Meghalaya State Pollution Control Board (MSPCB), Shillong, Meghalaya

ENERGY MANAGEMENT

Energy auditing deals with the sustainable and optimized utilization of energy in the college campus. Main supply of energy source in our campus is from Meghalaya Energy Corporation Limited (MeECL). The total Electric energy consumption in college campus is 960 KWh / year. Maximum consumption of the energy is in office, laboratories, classrooms and hostel. To analyze the total energy consumption, 3 different blocks in the college are categorized viz. Administrative building, Wollaston annexe, Media-IT annexe and Hostels. Electricity can be used efficiently by replacing CFL bulbs and tube lights with LED bulbs. The total number of LED bulbs in administrative building is 498; in Media Annex is 220 and 384 in Wallaston annexe. Besides this, solar energy cell of capacity 47 Kw is also installed in the campus as an alternative source of renewable energy.



SOLAR ENERGY IN THE CAMPUS

WASTE DISPOSAL

Waste Management in colleges and universities is important in achieving a higher level of environmental performance. Recycling and reusing contributes to the conservation of natural resources, saving energy and helping to protect the environment. This therefore reduces the impact on the environment by minimizing pollutions with proper waste management. St. Anthony's College adopts environmentally friendly practices in waste management such as segregation of waste at the source by installing separate bins for bio-degradable and non-biodegradable waste. Biodegradable wastes are collected to the vermin compost unit for making vermi-compost. The segregated waste is then placed in segregating dumps which are then collected by the municipal authorities to be transported to the municipal dumping ground, animal waste from laboratories are treated with 10% sodium hypochlorite before handling them to the municipality for disposal.

DRINKING WATER SUPPLY

The college is equipped with a centrally located reverse osmosis drinking water supply that is filtered and supplied at different locations in the campus for the drinking purposes of the students, staffs and for people who visits the college.



REVERSE OSMOSIS DRINKING WATER SUPPLY UNIT

CONCLUSION

Green auditing is the process of identifying and determining an ecofriendly and sustainable utilization of resources in an institution. During the process details of flora and faunal diversity, environmental parameters, energy consumption, water and waste management were recorded. The following conclusions and suggestions can be adopted for maintaining an eco-friendly and green environment.

The college campus has several species of trees including flowering plants, medicinal plants, fruit plants and local varieties. There are different species of fauna which includes birds, butterflies and moths, reptiles, amphibians etc.. which account for rich biodiversity of the campus.

Ambient air quality and other parameters are within the prescribed limits.

The college has installed solar panel systems for electricity generation which is helpful for minimizing energy consumption. LED lamps are used in all sections, use of fluorescent tubes and bulb is minimized.

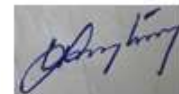
Biodegradable waste is used efficiently for composting and vermi composting.

RECOMMENDATIONS

- To maintain green cover and carbon sequestration potential of the college campus.
- Setting up of water recycling unit where the recycled water can be used for gardening and other purposes in the college campus and hostels.
- The solid waste should be reused or recycled at maximum possible places.
- Establishment of an E-waste collection center in the campus.



Alban D. Marbaniang
Principal Investigator



Dr. Wympher Langstang
Co-Investigator



Dayomika R. Kharsyntiew
Co-Investigator



★ ★ ★ ★ ★
CERTIFICATE

This is Certify that

ST. ANTHONY'S COLLEGE, SHILLONG, MEGHALAYA

has established Institution Innovation Council (IIC) as per the Norms of

Innovation Cell, Ministry of HRD, Govt. of India

on 21st November, 2018.

A handwritten signature in black ink, appearing to read "Anil D. Sahasrabudhe".

Prof. Anil D. Sahasrabudhe
Chairman, AICTE

A handwritten signature in black ink, appearing to read "R. Subrahmanyam".

Shri. R. Subrahmanyam
Secretary, MHRD

A handwritten signature in black ink, appearing to read "Abhay Jere".

Dr. Abhay Jere
CIO, MHRD, Innovation Cell



**Office of the Commissioner for Persons with Disabilities,
Government of Meghalaya.**

Temple Road, Lower Lachumiere, Shillong - 793001

Phone No: 0364-2506521

E-mail: cpwdmeg@gmail.com

No. CPWD/AIC-I/Pt-II/2015/472

Dated Shillong, the 23rd July, 2021

BARRIER FREE CERTIFICATION OF ST. ANTHONY'S COLLEGE BUILDING

This is to certify that the building of St. Anthony's College, Shillong has in place maximum accessibility features viz.. accessible ramps, accessible corridors and passages, accessible toilets, lift, staircases conforming to the space standards and architectural design.

However, certain accessibility features viz.. handrails, signages, warning tactiles and warning strips on stairs still needs to be incorporated.




Commissioner for Persons with Disabilities,
Meghalaya, Shillong.

All India Council for Technical Education

(A Statutory body under Ministry of HRD, Govt. of India)

Nelson Mandela Marg, Vasant Kunj, New Delhi-110070 Website: www.aicte-india.org



APPROVAL PROCESS 2020-21

Extension of Approval (EoA)

F.No. Eastern/1-7010371757/2020/EOA

Date: 30-Apr-2020

To,

The Principal Secretary (Education),
Govt. of Meghalaya,
Addl. Sectt. Bldg., Shillong-793001

Sub: Extension of Approval for the Academic Year 2020-21

Ref: Application of the Institution for Extension of Approval for the Academic Year 2020-21

Sir/Madam,

In terms of the provisions under the All India Council for Technical Education (Grant of Approvals for Technical Institutions) Regulations 2020 notified by the Council vide notification number F.No. AB/AICTE/REG/2020 dated 4th February 2020 and norms standards, procedures and conditions prescribed by the Council from time to time, I am directed to convey the approval to

Permanent Id	1-464602391	Application Id	1-7010371757
Name of the Institute	ST. ANTHONY'S COLLEGE, SHILLONG	Name of the Society/Trust	ST. ANTHONY'S COLLEGE, SHILLONG
Institute Address	BOMFYLE ROAD, SHILLONG 793001 MEGHALAYA, SHILLONG, EAST KHASI HILLS, Meghalaya, 793001	Society/Trust Address	BOMFYLE ROAD, SHILLONG 793001 (DIST.: EAST KHASI HILLS), SHILLONG, EAST KHASI HILLS, Meghalaya, 793001
Institute Type	Private-Self Financing	Region	Eastern

To conduct following Courses with the Intake indicated below for the Academic Year 2020-21

Program	Level	Course	Affiliating Body (University /Body)	Intake Approved for 2019-20	Intake Approved for 2020-21	NRI Approval Status	PIO / FN / Gulf quota/ OCI/ Approval Status
MCA	POST GRADUATE	MASTERS IN COMPUTER APPLICATIONS	North Eastern Hill University, Shillong	30	30	NA	No

It is mandatory to comply with all the essential requirements as given in APH 2020-21 (Appendix 6)

Important Instructions

1. The State Government/ UT/ Directorate of Technical Education/ Directorate of Medical Education shall ensure that 10% of reservation for Economically Weaker Section (EWS) as per the reservation policy for admission, operational from the Academic year 2020-21 is implemented without affecting the reservation percentages of SC/ ST/ OBC/ General. However, this would not be applicable in the case of Minority Institutions referred to the Clause (1) of Article 30 of Constitution of India. Such Institution shall be permitted to increase in annual permitted strength over a maximum period of two years beginning with the Academic Year 2020-21
2. The Institution offering courses earlier in the Regular Shift, First Shift, Second Shift/Part Time now amalgamated as total intake shall have to fulfil all facilities such as Infrastructure, Faculty and other requirements as per the norms specified in the Approval Process Handbook 2020-21 for the Total Approved Intake. Further, the Institutions Deemed to be Universities/ Institutions having Accreditation/ Autonomy status shall have to maintain the Faculty: Student ratio as specified in the Approval Process Handbook. All such Institutions/ Universities shall have to create the necessary Faculty, Infrastructure and other facilities WITHIN 2 YEARS to fulfil the norms based on the Affidavit submitted to AICTE.
3. In case of any differences in content in this Computer generated Extension of Approval Letter, the content/information as approved by the Executive Council / General Council as available on the record of AICTE shall be final and binding.
4. Strict compliance of Anti-Ragging Regulation: - Approval is subject to strict compliance of provisions made in AICTE Regulation notified vide F. No. 373/Legal/AICTE/2009 dated July 1, 2009 for Prevention and Prohibition of Ragging in Technical Institutions. In case Institution fails to take adequate steps to Prevent Ragging or fails to act in accordance with AICTE Regulation or fails to punish perpetrators or incidents of Ragging, it will be liable to take any action as defined under clause 9(4) of the said Regulation.

Prof.Rajive Kumar
Member Secretary, AICTE

Copy to:

1. **The Director Of Technical Education**, Meghalaya**
2. **The Registrar**,
North Eastern Hill University, Shillong**
3. **The Principal / Director,
ST. ANTHONY'S COLLEGE, SHILLONG
Bomfyle Road,
Shillong 793001
Meghalaya,
Shillong,East Khasi Hills,
Meghalaya,793001**
4. **The Secretary / Chairman,
BOMFYLE ROAD, SHILLONG 793001
(DIST.: EAST KHASI HILLS)
SHILLONG,EAST KHASI HILLS
Meghalaya,793001**
5. **The Regional Officer,
All India Council for Technical Education
College of Leather Technology Campus
Block LB, Sector III, Salt Lake City
Kolkata - 700 098, West Bengal**
6. **Guard File(AICTE)**

Note: Validity of the Course details may be verified at <http://www.aicte-india.org/>

** Individual Approval letter copy will not be communicated through Post/Email. However, consolidated list of Approved Institutions(bulk) will be shared through official Email Address to the concerned Authorities mentioned above.



**SAP Cloud Service Schedule (for indirect sales)
Effective 18/08/2017 ("Effective Date")**

Between: **SAP India Private Limited**
06th Floor, RMZ Eco World Plot C1, 8A campus
Sarjapur Marathahalli Outer Ring Road,
Devarabeesanahalli, Bangalore East Taluk,
Bangalore 560103, Karnataka, India.
(hereinafter "SAP")

And
St Anthony's College
With offices at: Bomfyle Road, East Khasi Hills / Shillong 793001
(hereinafter "Customer")

SAP Reference Number: 0220712108

PREAMBLE:

WHEREAS Customer has entered into an agreement with **BluePrint Technologies Private Limited** ("SAP Reseller") for the supply of the SAP Cloud Service and/or Consulting Services as set out in the applicable Order Form submitted by SAP Reseller to SAP ("**Order Form**");

WHEREAS SAP Reseller has entered into a reseller agreement with SAP whereby SAP grants to SAP Reseller the right to promote and market SAP Cloud Service;

WHEREAS SAP desires to make available to Customer and Customer desires to accept from SAP, a right to use the SAP Cloud Service and/or receive Consulting Services set forth in the Order Form upon the terms and conditions set out in this SAP Cloud Service Schedule; and

WHEREAS Customer understands and acknowledges that SAP Reseller, through which Customer has arranged for the procurement of the SAP Cloud Service or from which Customer receives any Consulting Services or other services related to the SAP Cloud Service, is not an agent of SAP.

NOW, THEREFORE, and in consideration of good and valuable consideration, the receipt of which is hereby acknowledged, the Parties agree as follows:

1. SAP and Customer agree that this SAP Cloud Service Schedule (for indirect sales), when signed by Customer and returned to SAP, is a binding agreement for the SAP Cloud Service(s) listed in the applicable Order Form submitted by SAP Reseller (the "**Service**") and any Consulting Services listed therein, and is governed by the terms and conditions of the SAP General Terms and Conditions for SAP Cloud Services (for indirect sales) ("**GTC**"), and all documents referenced by the GTC and/or this SAP Cloud Service Schedule, including without limitation any product-specific Supplemental Terms and Conditions ("**Supplemental Terms**"), current at the time of execution of this SAP Cloud Service Schedule. Copies of the GTC and Supplemental Terms are found at <http://www.sap.com/company/legal/index.epx> and made a part hereof. All components are integral to this agreement, and collectively are referred to herein as the "**Agreement**." Customer acknowledges it has had the opportunity to review the GTC and Supplemental Terms prior to executing this SAP Cloud Service Schedule. SAP recommends that Customer prints copies of the GTC and Supplemental Terms for Customer's own records. All defined terms in the GTC or Supplemental Terms used in this SAP Cloud Service Schedule shall have the same meaning as set forth in the GTC or Supplemental Terms.

2. The following information must be provided prior to Customer obtaining access to the Service.

Customer Name:	St Anthony's College
Primary Access Address:	Bomfyle Road, East Khasi Hills / Shillong 793001
Order confirmation recipient Name:	Rony John
Order Confirmation recipient e-mail:	ronyjoh@bpterp.com
System provisioning notification recipient name:	Br Albert Longley Dkhar SDB
System provisioning notification recipient e-mail:	principal@anthonys.ac.in

3. Support offerings for the Service will be provided by SAP as described at <http://www.sap.com/corporate-en/our-company/policies/cloud/customer-support.epx>. The support offerings are incorporated herein by reference. Support for specific Services that differs from the standard support offerings shall be set forth in the applicable Supplemental Terms and/or Documentation for the Service.

If level one support for a Service is provided by SAP Reseller as set forth in Customer's agreement with the SAP Reseller, Customer shall submit all support requests to and through the SAP Reseller instead of directly to SAP. Customer must contact the SAP Reseller to obtain contact details for its help desk, support website and/or support case management system (if any).

4. Unless stated otherwise in the Supplemental Terms for or elsewhere in this Service Schedule for a particular Service, SAP and Customer are subject to the "Data Privacy and Security Exhibit" located at <http://www.sap.com/corporate-en/our-company/policies/cloud/data-security.epx>, which is incorporated herein by reference. The Data Privacy and Security Exhibit shall serve as a commissioned written data processing agreement.

5. If Customer and SAP Reseller agree on an extension to the subscription term for the Services to permit Customer to export and retrieve Customer Data, which shall not be more than ninety (90) days, then the Service Schedule will remain in place until the end of the extension. Subject to the foregoing, SAP shall have no obligation to maintain or provide any Customer Data after termination or expiration, except as follows. At Customer's request, upon termination or expiration of the Agreement, SAP shall, within a reasonable time period, remove, delete, purge, overwrite or otherwise render inaccessible all Customer Data still remaining on the servers used to host the Service (excluding any Customer Data in the Ariba Network) to the extent possible based on the then-current technology available within the Service, unless and to the extent applicable laws and regulations require further retention of such data.

6. **No Legal Advice.** Customer acknowledges and agrees that SAP is not in the business of providing legal advice, and that no content available within the Service or provided by SAP in connection therewith should be misconstrued as legal advice.

Accepted by:

St Anthony's College

Authorized Signature: _____

Type Name: _____

Title: _____

Date: _____

If level one support for a Service is provided by SAP Reseller as set forth in Customer's agreement with the SAP Reseller, Customer shall submit all support requests to and through the SAP Reseller instead of directly to SAP. Customer must contact the SAP Reseller to obtain contact details for its help desk, support website and/or support case management system (if any).

4. Unless stated otherwise in the Supplemental Terms for or elsewhere in this Service Schedule for a particular Service, SAP and Customer are subject to the "Data Privacy and Security Exhibit" located at <http://www.sap.com/corporate-en/our-company/policies/cloud/data-security.epx>, which is incorporated herein by reference. The Data Privacy and Security Exhibit shall serve as a commissioned written data processing agreement.

5. If Customer and SAP Reseller agree on an extension to the subscription term for the Services to permit Customer to export and retrieve Customer Data, which shall not be more than ninety (90) days, then the Service Schedule will remain in place until the end of the extension. Subject to the foregoing, SAP shall have no obligation to maintain or provide any Customer Data after termination or expiration, except as follows. At Customer's request, upon termination or expiration of the Agreement, SAP shall, within a reasonable time period, remove, delete, purge, overwrite or otherwise render inaccessible all Customer Data still remaining on the servers used to host the Service (excluding any Customer Data in the Ariba Network) to the extent possible based on the then-current technology available within the Service, unless and to the extent applicable laws and regulations require further retention of such data.

6. **No Legal Advice.** Customer acknowledges and agrees that SAP is not in the business of providing legal advice, and that no content available within the Service or provided by SAP in connection therewith should be misconstrued as legal advice.

Accepted by:

St Anthony's College



Authorized Signature: _____

Type Name: BY ALBERT L DKHAR, SDB, Ph.D

Title: PRINCIPAL

Date: 31/7/2017

Principal
St. Anthony's College
Shillong - 793001
Meghalaya, India





**SAP Cloud Service Schedule (for indirect sales)
Effective 18/08/2017 ("Effective Date")**

Between: **SAP India Private Limited**
06th Floor, RMZ Eco World Plot C1, 8A campus
Sarjapur Marathahalli Outer Ring Road,
Devarabeesanahalli, Bangalore East Taluk,
Bangalore 560103, Karnataka, India.
(hereinafter "SAP")

And **St Anthony's College**
With offices at: Bomfyle Road, East Khasi Hills / Shillong 793001
(hereinafter "Customer")

SAP Reference Number: 0220712108

PREAMBLE:

WHEREAS Customer has entered into an agreement with **BluePrint Technologies Private Limited** ("SAP Reseller") for the supply of the SAP Cloud Service and/or Consulting Services as set out in the applicable Order Form submitted by SAP Reseller to SAP ("Order Form");

WHEREAS SAP Reseller has entered into a reseller agreement with SAP whereby SAP grants to SAP Reseller the right to promote and market SAP Cloud Service;

WHEREAS SAP desires to make available to Customer and Customer desires to accept from SAP, a right to use the SAP Cloud Service and/or receive Consulting Services set forth in the Order Form upon the terms and conditions set out in this SAP Cloud Service Schedule; and

WHEREAS Customer understands and acknowledges that SAP Reseller, through which Customer has arranged for the procurement of the SAP Cloud Service or from which Customer receives any Consulting Services or other services related to the SAP Cloud Service, is not an agent of SAP.

NOW, THEREFORE, and in consideration of good and valuable consideration, the receipt of which is hereby acknowledged, the Parties agree as follows:

1. SAP and Customer agree that this SAP Cloud Service Schedule (for indirect sales), when signed by Customer and returned to SAP, is a binding agreement for the SAP Cloud Service(s) listed in the applicable Order Form submitted by SAP Reseller (the "Service") and any Consulting Services listed therein, and is governed by the terms and conditions of the SAP General Terms and Conditions for SAP Cloud Services (for indirect sales) ("GTC"), and all documents referenced by the GTC and/or this SAP Cloud Service Schedule, including without limitation any product-specific Supplemental Terms and Conditions ("Supplemental Terms"), current at the time of execution of this SAP Cloud Service Schedule. Copies of the GTC and Supplemental Terms are found at <http://www.sap.com/company/legal/index.epx> and made a part hereof. All components are integral to this agreement, and collectively are referred to herein as the "Agreement." Customer acknowledges it has had the opportunity to review the GTC and Supplemental Terms prior to executing this SAP Cloud Service Schedule. SAP recommends that Customer prints copies of the GTC and Supplemental Terms for Customer's own records. All defined terms in the GTC or Supplemental Terms used in this SAP Cloud Service Schedule shall have the same meaning as set forth in the GTC or Supplemental Terms.


2. The following information must be provided prior to Customer obtaining access to the Service.

Customer Name:	St Anthony's College
Primary Access Address:	Bomfyle Road, East Khasi Hills / Shillong 793001
Order confirmation recipient Name:	Rony John
Order Confirmation recipient e-mail:	ronyjoh@bpterp.com
System provisioning notification recipient name:	Br Albert Longley Dkhar SDB
System provisioning notification recipient e-mail:	principal@anthony.ac.in

3. Support offerings for the Service will be provided by SAP as described at <http://www.sap.com/corporate-en/our-company/policies/cloud/customer-support.epx>. The support offerings are incorporated herein by reference. Support for specific Services that differs from the standard support offerings shall be set forth in the applicable Supplemental Terms and/or Documentation for the Service.

SAP Confidential
SAP Cloud Service Schedule (Indirect) enIN.v.10-2014
SAP OPP 302685170 / QUOTE 0220712108 / CASE 3060762671

Page 1 of 2
(10-2014)


Principal
St. Anthony's College
Shillong - 793001
Meghalaya, India



Ami Tech (India) Pvt. Ltd.

202, NSIC -EMDBP, Kamala Nagar,
ECIL Post, Secunderabad-500 062.

No: **026**

Date: 13/5/14

RECEIPT

Amount 12,00,000/-

Received From Saint. Anthony's college

For course SAP01 and SAP R1 for 300 Users

Amount Twelve lakh only Rupees 12,00,000/-

For payment of _____ by [] Cash _____

Cheque No. _____ Date _____ Bank _____

Total Fee	24,00,000/-
Initial Payment	12,00,000/-
Balance Due	12,00,000/-

Received by [Signature]
(Signature / Date)



Ami Tech (India) Pvt. Ltd.

202, NSIC -EMDBP, Kamala Nagar,
ECIL Post, Secunderabad-500 062.

No: **027**

Date: 30/07/14

RECEIPT

Amount 12,00,000/-

Received From St. Anthony's College

For course SAP01 and SAP R1 course for 300 users

Amount twelve lakh only Rupees 12,00,000/-

For payment of _____ by [] Cash _____

Cheque No. _____ Date _____ Bank _____

Total Fee	24,00,000/-
Initial Payment	12,00,000/- + 12,00,000/-
Balance Due	NIL

Received by [Signature]
(Signature / Date)

**AMI TECH (INDIA) PVT. LTD.**

An ISO 9001:2000 Company

HYD OFFICE205&206, NSIC-EMDBP,
NSIC, Kamalanagar, ECIL 'X' Road,
Hyderabad-500 062
Phone +914040176201 - 204 Fax +914040476200**TAX INVOICE**Original
Duplicate
TriplicateINVOICE : AMI/HYD/INV/67/2013-14
DATE : 28.03.2014
Ref PO Date : 20.03.2014**Buyer/Bill To :**
ST. Anthony's College
Shillong - 793 001

SLNO	DESCRIPTION	Qty Nos	Unit Price INR	Total INR
1	Supply of SAP Dongle Site License Model (SAP 01 and SAP B1)	300	7,619.05	2,285,714
	CST @ 5%			114,286
			Total Amount	2,400,000
Rupees Twenty Four Lakhs Only				

Ami Tech (India) Pvt Ltd : TIN No: 28236574685 and ST No:AABCA4593LST004
NOTE:- 1) The Terms and conditions are as per the PO and subsequent discussions**Ami Tech (I) Pvt Ltd , Bank A/C Info:**
Name of the Bank - Axis Bank Ltd.
A/C No.912030023383112
Branch - Mumbai Fort (MH)
IFSC/RTGS Code: UTIB0000004.

For Ami Tech (India) Pvt. Ltd.

Authorized Signatory

We appreciate doing business with you !

*Registered Office: 6 th Feltham House, 2nd Floor, 10.JN Heredia Marg, Ballard Estate, Mumbai-400 001.



ST. ANTHONY'S COLLEGE

SHILLONG 793001

Phone : (0364) 222 3558, 222 2558

Fax: (0364) 222 9558

E-mail: principal@anthonys.ac.in

www.anthonys.ac.in

Re-accredited "A" with CGPA: 3.6/4 by NAAC

Principal

Ref. No: SAC/ALD/146/2014-01 Dated March 20, 2014

To,

Ami Tech India Pvt. Ltd.

**205&206 NSIC-EMDBP,
Kamalanagar, ECIL Post,
Hyderabad – 500062, India**

Subject: Purchase Order

At the outset, we would like to thank you for choosing ST. ANTHONY'S COLLEGE, Shillong for offering SAP 01 and SAP B1 courses to our students through SAP Dongle Site License. We are happy to accept your proposal and send you this P.O for the agreement under the following terms and conditions:

- SAP shall provide SAP 01 + SAP B1 Dongle Site License content to our college
- SAP shall provide the contemporary curriculum of SAP 01 and SAP B1
- ST. ANTHONY'S COLLEGE will pay 50% course fees in March 2014 to Ami Tech and remaining 50% in the form of PDC by June 2014 for the committed students.
- All Prices are inclusive of taxes
- Our College will get an access to SAP01 and SAP B1 Dongle Site License for 300 User Id's. This will facilitate the students to access the course and practice SAP transactions available in SAP01 at the college at their own pace.
- The license is valid permanently

Course Details

Course	Duration	Mode of Delivery
SAP 01	24 Hours of Course Content	Dongle Site License
SAP B1	80 Hours of Course Content	Dongle Site License

Payment Schedule	
Course Type	SAP Dongle Site License Model (SAP 01 Course + SAP B1 Course)
No of User ID;s of SAP01,SAP B1	300
Total P.O Value	Rs. 24,00,000.00
Payment Terms	50% Advance Payment to be made and 50% in the form of PDC by June 2014

Thank you.

With Best Regards,

Yours truly,




**Br. Albert Longley Dkhar sdb
Principal**

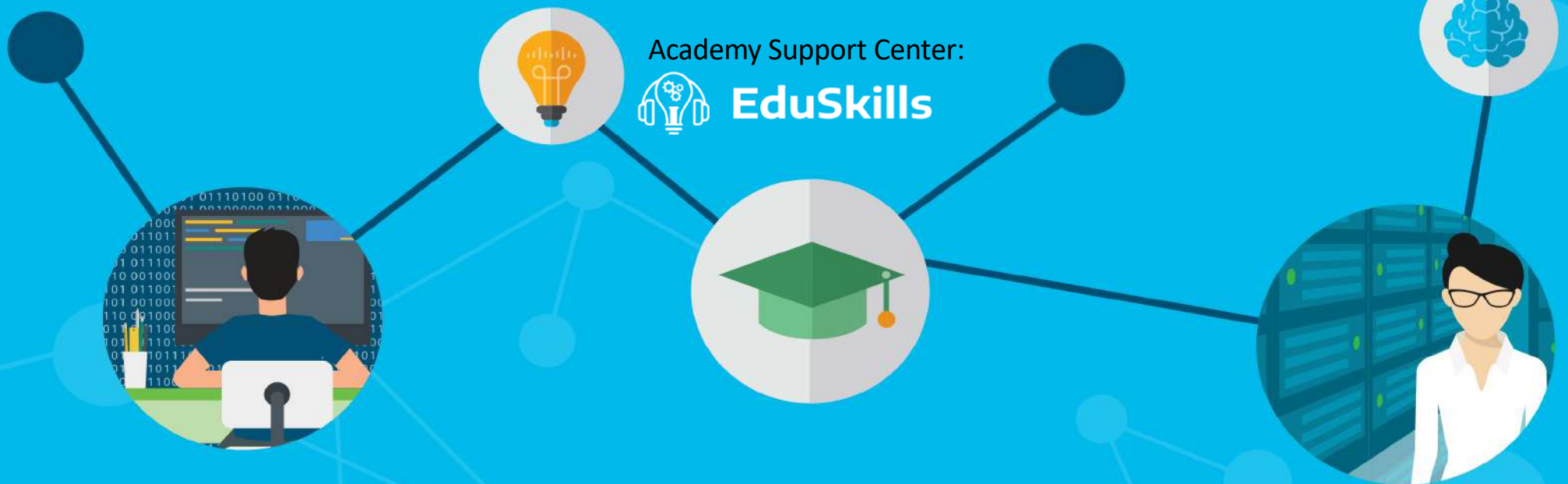


Cisco Networking Academy

St. Anthony's College

is an official partner of Cisco

Cisco Academy ID: 3040203



Academy Support Center:



EduSkills

To,

Date: 24th June, 2013

Fr. Joby Joseph SDB
Vice Principal
Head, Dept. of Computer Science
St. Anthony's College
Shillong

Letter of Acceptance

Dear Sir,

This is with reference to our discussions and proposal; we are pleased to give you the framework of our association. You are requested to sign the same as token of acceptance.

Role of Tally Solutions Pvt. Ltd. (TSPL)

1. TSPL shall offer its specialized program 'Learning Tally.ERP 9' in the campus.
2. TSPL shall provide 'Tally.ERP 9 for Beginners' courseware.
3. TSPL shall decide the programme schedule and other aspects of the programme in consultation with the college.
4. TSPL shall conduct TWO online tests for the students during the duration of the course.
5. TSPL shall issue course completion certificates to those who have successfully completed the training programme with minimum attendance of 70%.

TSPL shall dispatch the courseware only after receiving the payment of the fees for all the students.

Role of College:

1. College shall extend all support to TSPL for successful delivery of the program.
2. College shall remit the fees to TSPL before the start of the program.
3. College shall follow the guidelines and procedures advised by TSPL for running the program/courses and set satisfactory standards relating to registration of participants, course administration and evaluation necessary for good governance.

4. College shall provide all infrastructure including Computers, Electronic Teaching Aids and class room complete with facilities for lectures and practical demonstration.
5. College shall fill all the necessary Annexures and handover the same to TSPL on time.
6. College shall maintain the attendance records of the students throughout the duration of the course.
7. College shall send the Student Feedback Form (Annexure-7) to TSPL after completion of 50% of the training.
8. College shall send Course Completion Letter (Annexure-8) to TSPL for the issuance of Certificates.
9. The recommended timelines of the training programme is 60 days from the date of commencement.



Chintamanigouda Patil
Tally Solutions Private Limited
TallyFon: +91 (80) 6628 2559, Extn. (3218)
Mobile: +91 (88612 01892)

Signed and accepted
(Authorised Signatory of TSPL)

Signed and accepted
(Authorised Signatory with seal of
St. Anthony's College, Shillong)

PROFORMA INVOICE

Tally Education Pvt Ltd No. 23 & 24, AMR Tech Park IIB Hongasandra, Hosur Main Road Bangalore. GSTIN/UIN: 29AAECT8092J1ZO GSTIN/UIN: 29AAECT8092J1ZO CIN: U80301KA2013PTC071438 E-Mail : teplaccounts@tallysolutions.com	Invoice No.	Dated
	SS/PI/0005/17-18	16-Aug-2017
	Supplier's Ref.	Mode/Terms of Payment Immediate
Buyer St. Anthony's College - Shillong Shillong - 793001 State Name : Meghalaya, Code : 17	Terms of Delivery	

Sl No.	Description of Goods	GST Rate	Quantity	Rate	per	Amount
1	TallyACE-Vouchers	18 %	90 nos	810.00	nos	72,900.00
2	TallyACE-Book <i>Combo Offer</i>	0 %	90 nos			
	IGST-18%					72,900.00
						13,122.00
Total			180 nos			₹ 86,022.00

Amount Chargeable (in words)

E. & O.E

INR Eighty Six Thousand Twenty Two Only

HSN/SAC	Taxable Value	Integrated Tax		Total Tax Amount
		Rate	Amount	
999293	72,900.00	18% 0%	13,122.00	13,122.00
Total	72,900.00		13,122.00	13,122.00

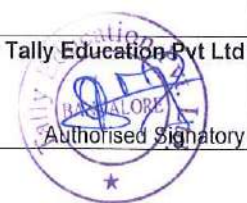
Tax Amount (in words) : **INR Thirteen Thousand One Hundred Twenty Two Only**

Company's PAN : **AAECT8092J**

Declaration

We declare that this invoice shows the actual price of the goods described and that all particulars are true and correct.

for Tally Education Pvt Ltd



This is a Computer Generated Invoice



Estd. 1934

Re-accredited "A" with CGPA: 3.6/4 by NAAC
College with Potential for Excellence awarded by UGC

Principal

ST. ANTHONY'S COLLEGE

SHILLONG 793001

Phone : (0364) 222 3558, 222 2558

Fax: (0364) 222 9558

E-mail: principal@anthonys.ac.in

www.anthonys.ac.in

Affiliated to NEHU, a Central University
UGC Recognized and AICTE Approved

10th June 2015

To,

**Tally Solutions Pvt. Ltd
Bangalore.**

Subj: Order Letter for Tally ERP -9 Student Kit 150 nos

Dear Sir,

Greetings from St. Anthony's College, Shillong.

With respect to the subject quoted above, I have the privilege to place the order for the Tally ERP-9 student kit of 150 numbers.

Kindly make provision to ship the material at the earliest as the course has started and we are short of the book.

Kindly provide us an invoice and bank details for the transfer of the amount.

Yours truly,

**Br. Albert L Dkhar SDB
Principal.**





Estd. 1934

Re-accredited "A" by NAAC

College with Potential for Excellence awarded by UGC

Principal

ST. ANTHONY'S COLLEGE

SHILLONG 793001

Phone : (0364) 222 3558, 222 2558

Fax: (0364) 222 9558

E-mail: principal@anthonys.ac.in

www.anthonys.ac.in

Affiliated to NEHU, a Central University

UGC Recognized and AICTE Approved

8th August, 2017

To,

**Tally Solutions Pvt. Ltd
Bangalore.**

Subj: Order Letter for TallyACE Student Kit 90 nos

Dear Sir,

Greetings from St. Anthony's College, Shillong.

With respect to the subject quoted above, I have the privilege to place the order for the Tally Ace student kit of 90 numbers.

Kindly make provision to ship the material at the earliest as the course has started and we are short of the book.

Kindly provide us an invoice and bank details for the transfer of the amount.

Yours truly,



**Br. Albert L Dkhar SDB
Principal.**



Estd. 1934

Re-accredited "A" with CGPA: 3.6/4 by NAAC
College with Potential for Excellence awarded by UGC

Principal

ST. ANTHONY'S COLLEGE

SHILLONG 793001

Phone : (0364) 222 3558, 222 2558

Fax: (0364) 222 9558

E-mail: principal@anthonys.ac.in

www.anthonys.ac.in

Affiliated to NEHU, a Central University
UGC Recognized and AICTE Approved

19th April, 2016

To,

**Tally Solutions Pvt. Ltd
Bangalore.**

Subj: Order Letter for Tally ERP -9 Student Kit 100 nos

Dear Sir,

Greetings from St. Anthony's College, Shillong.

With respect to the subject quoted above, I have the privilege to place the order for the Tally ERP-9 student kit of 100 numbers.

Kindly make provision to ship the material at the earliest as the course has started and we are short of the book.

Kindly provide us an invoice and bank details for the transfer of the amount.

Yours truly,

**Br. Albert L Dkhar SDB
Principal.**





ST ANTHONY'S COLLEGE

(A Don Bosco Institution)

SHILLONG 793 001

MEGHALAYA - INDIA

NAAC Re-Accredited with 'A'

College with Potential for Excellence (awarded by UGC)

Declaration:

*I hereby declare that the details and information given above are complete
and true to the best of my knowledge and belief.*



Principal
Principal
St. Anthony's College
Shillong - 793001
Meghalaya - India